



SPOT / SPORT LIGHT

Designed to illuminate areas 100+ feet away, the Horner Spot Light offers versatility, enhanced illumination, and profitable ROI. Available in 320W, 600W and now 1000W sizes, get your Spot Light with an optional visor to better direct the light and reduce light pollution. The Spot Light is well-suited for outdoor applications such as reservoirs, train/truck depots, or any location you want to illuminate from a safe distance. The quality and durability of these powerful lights ensures it will outshine the competition for years to come.

LONG LIFETIME

- Premium, top-tier LEDs
- 5-year warranty backed by U.S. company founded in 1949
- Rated for 91,000 hrs at L70
- Quality driver with integrated 4 kV surge standard for 320/600W; 20 kV surge standard for 1000W
- -40°C to 50°C ambient temperature ensures long lifetime in a variety of conditions

ILLUMINATING RESULTS

- 70 CRI standard enhances color and clarity
- Powerful light engine creates even output
- Optional visor to prevent light pollution
- Ideal for illuminating hazardous locations from a safe distance
- 25° optical lens comes standard for 320W and 600W
- 20° lens standard for 1000W

FULL CIRCLE DESIGN

- Output of 48,000 - 135,000 lumens
- Engineered with quality, space-age materials
- Traditional round profile is light weight and easy to install
- 120-277 standard with 277-480 VAC option available for 320/600W
- IP65 Dust and Water protection UL wet-rated

BRIGHT SAVINGS

- Typical payback of 12 - 24 months
- 0-10 Dimming standard
- Up to 150 lumens/watt

POSSIBLE APPLICATIONS

- | | | |
|-------------------|---------------|----------------------|
| ■ Water Treatment | ■ Stadiums | ■ Hangars |
| ■ Trucking Depots | ■ Natatoriums | ■ Industrial garages |

MODEL	WEIGHT	DIMENSIONS (D x H)	CRI	CCT	LUMENS	TOTAL WATTS	LUMENS/WATTS	L70	EPA
ETG-SPL320-WL750-P1	29 lbs 6 oz	15.7"D x 18.2"H	70+	5000K	48,000	320	150	91,000 hrs	1.55 ft²
ETG-SPL320-WL750-P2	29 lbs 6 oz				48,000	320	150		
ETG-SPL600-WL750-P1	36 lbs				87,000	600	145		
ETG-SPL600-WL750-P2	36 lbs				87,000	600	145		
ETG-SPL1000-WL750-P2	73 lbs	17"W x 19.75"H x 19.5"D			135,000	1000	135		2.25 ft²

*320W and 600W standard with 25° optics only

*1000W standard with 20° optics only

*1000W standard with electrical box and 20 kV surge protector; it is optional for other models

*DLC 5.1 certification is pending for the 1000W fixtures

YOUR PART NUMBER

ETG-SPL wattage - WL750-P power - optional Beam Angle

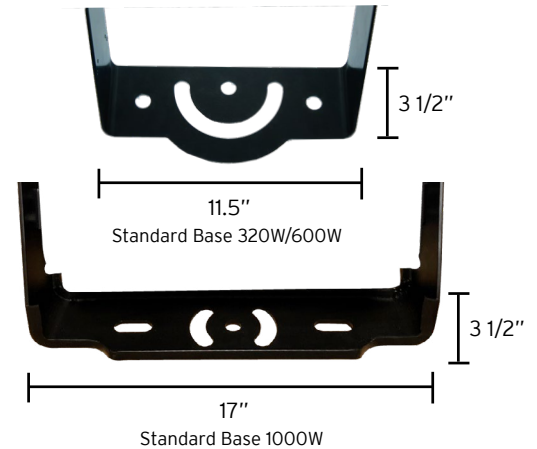
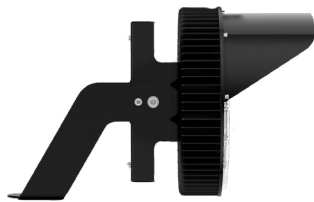
320 (320W)
600 (600W)
1000 (1000W)

1 (120-277 VAC - std 320/600W)
2 (277-480 VAC - 320/600W)
 (200-480 VAC - std 1000W)

*Leave blank if standard
45D (320/600W - 45°)
90D (320/600W - 90°)
40D (1000W - 40°)
60D (1000W - 60°)



ETG-SPL1000-WL750-P2
1000W with 20° lens

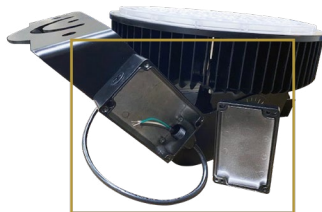


PRODUCT ACCESSORIES

Options for 320W/600W Only



ETG-SPL-SRG-P1
20K Surge Protector P1 models (120-277VAC)



ETG-BKT-SPL-BOX
Electrical Box



ETG-SPL-SHD
Light Visor - 320/600W



ETG-SPL-SHD-1000
Light Visor - 1000W

ETG-BKT-SPL-SF
Slip Fitter
Available for 320/600W only



Aftermarket Optional Lens

320/600W
 45°: ETG-LEN-SPL-45D
 90°: ETG-LEN-SPL-90D

1000W
 40°: ETG-LEN-SPL-40D
 60°: ETG-LEN-SPL-60D