

## GENERATION 2 RGB INSPECTION LIGHTING

Optimizing unique color outputs to benefit an array of inspectable materials, the ETG-HLS100-RGB houses red, green, and blue LEDs in one efficient, practical unit. A high-power color-mixing floodlight, the ETG-HLS100-RGB is designed for use in paint inspection. The tightly-coupled LEDs are mixed behind an optical lens cover to provide even coverage, variable amounts of light, and illuminating precision. Great for materials such as stainless steel, different types of wood, various paints, and stonework, the ETG-HLS100-RGB's unique color patterns help you detect most product flaws or imperfections.

The ETG-HLS100-RGB is designed to work alongside Horner's lighting control system, an RGB enclosure with X7 Controller, with simple display operation. An RGB controller with enclosure is required to operate the ETG-HLS100-RGB.

The ETG-HLS100-RGB features an integrated driver/controller that allows precise control of the LED output and color. The system is powered via low voltage 48 volt DC to eliminate high voltage power in production and inspection areas. The controller is connected via standard cat 5 cables and can be daisy chained to support multiple lights with individual or coordinated controller.

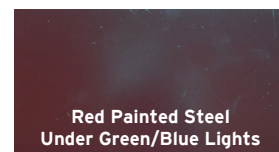
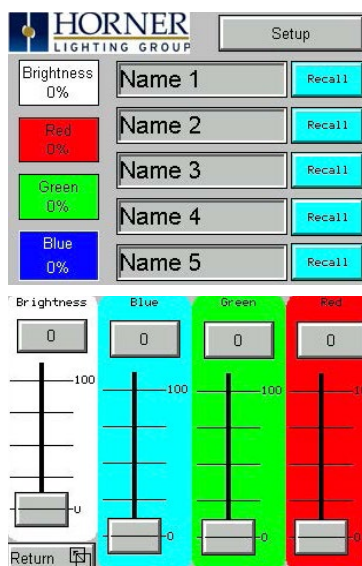
### BENEFITS:

- Plug & Play Ready
- Very high output color mixing flood luminaire for industrial inspection
- Wide flood distribution for large inspection areas
- Industrial enclosure for harsh environments
- Easy to use controls with options to interface into many industrial control systems (Ethernet, CAN, etc.)

### IMPROVEMENTS WITH GENERATION 2 RGB

- Consistent color control with multi color diodes instead of discreet individual diodes
- 7 inch color screen control over 5 inch color screen
- Industrial based controls over residential DMX controls
- Elimination of 6 light maximum per driver box
- Infinite number of lights can be controlled with one controller
- Optical Lens available for multiple light distributions dependent on inspection area
- Extruded aluminum light housing for better heat distribution and longer fixture life

SPECIFICATIONS	
Wattage	100 watts total color / 100 watts of Red, OR Green, OR Blue or a mix
Red Typical Wavelength	620 nm
Green Typical Wavelength	530 nm
Blue Typical Wavelength	470 nm
Beam Angle	Adjustable with different lens
Ambient Temperature	-40° C to 50° C
Fixture Color	Clear anodized
Weight	11 lbs, 15 oz
Enclosure	Extruded aluminum
Mounting	Adjustable mounting brackets/ Pendant cable
L70	>36,000 hrs
Warranty	5 years



ETG-HLS100-RGB-P1-3-120 - Luxor RGB Light  
ETG-CTL-X7-RGB - RGB Controller