



LED REMOTE PHOSPHOR LINEAR SERIES

Our award-winning Remote Phosphor Linear fixture comes in 4 ft and 8 ft lengths and multiple wattages. Typical phosphor converted LED lighting starts with a blue LED light source where phosphor is added to the LED package, converting the blue light into a mixture of light that appears white. Instead of placing the phosphor directly on the LED, Horner uses a remote phosphor technology that places the phosphor away from the LED. With numerous advantages, including longer life, higher efficacy, better color consistency and even light distribution, this creates a smooth, singular light source - no pinpoint LEDs.

LONG LIFETIME

- Premium, top-tier LEDs
- 5 year warranty backed by U.S. company founded in 1949
- Rated for 96,000 hrs at L90
- Quality driver with integrated 4 kV surge
- -40°C to 50°C ambient temperature ensures long lifetime in a variety of conditions
- Superior LED thermal management ensures long lifetime

ILLUMINATING RESULTS

- Up to 30% higher system efficacy compared to conventional LEDs
- Powerful light engine creates even output with 5 different distributions
- Optional field-installable aluminum reflectors for low/high bay, aisle, and task applications
- Optional acrylic diffuser provides control, minimizing potential for glare
- Typical mounting heights of 8' - 60'
- No horizontal dust collecting surface bulbs

FULL CIRCLE DESIGN

- Output of 8,400 - 50,400 lumens
- Made in USA with global components
- Engineered with quality, space-age materials
- Minimalist design improves cooling and minimizes shipping costs
- Quickly mount via cable (standard)
- Universal AC input/full range, 120~277 VAC
- Glare free and uniform light distribution
- High CRI options, optional red LED enrichment technology*

BRIGHT SAVINGS

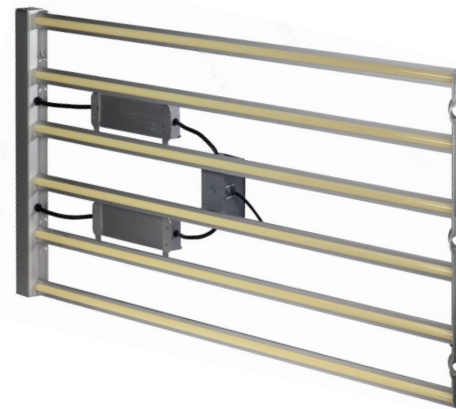
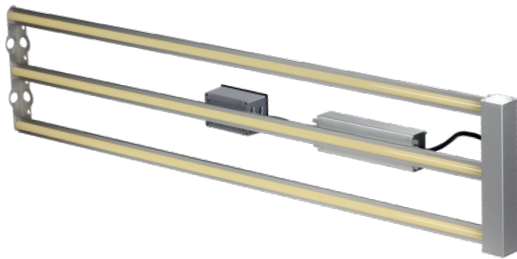
- Typical payback of 12 - 24 months
- Optional 0-10 Dimming
- Utilize optional motion
- Reduce downtime and minimize maintenance costs

POSSIBLE APPLICATIONS

- | | | |
|---------------------|----------------------|-----------------------------|
| ■ Grocery stores | ■ Stadiums | ■ Hangars |
| ■ Warehouses | ■ Natatoriums | ■ Indoor storage facilities |
| ■ Department stores | ■ Industrial garages | ■ Gymnasiums |

MODEL 4'	DIMENSIONS	WEIGHT	CRI	CCT	LUMENS *Estimated	WATTS	LUMENS/WATTS	L90 HOURS
1 TUBE								
ETG-LRP-1080	49"l x 3.10w x 3" h	3.53 lbs	80	5000K	*8400	80	105	>96,000
2 TUBE								
ETG-LRP-2160	49"l x 6.10w x 3" h	7.30 lbs	80	5000K	*16800	160	105	>96,000
3 TUBE								
ETG-LRP-3240	49"l x 10.60w x 3" h	10.90 lbs	80	5000K	*25200	240	105	>96,000
4 TUBE								
ETG-LRP-4320	49"l x 15.10w x 3" h	14.60 lbs	80	5000K	*33600	320	105	>96,000
6 TUBE								
ETG-LRP-6480	49"l x 24.10w x 3" h	21.80 lbs	80	5000K	*50400	480	105	>96,000
MODEL 8'								
1 TUBE								
ETG-L8RP-1080	96"l x 3.10w x 3" h	7.50 lbs	80	5000K	*8400	80	105	>96,000
ETG-L8RP-1160	96"l x 3.10w x 3" h	7.50 lbs	80	5000K	*16800	160	105	>96,000
2 TUBE								
ETG-L8RP-2320	96"l x 6.13w x 3" h	14.80 lbs	80	5000K	*33600	320	105	>96,000

*Red Enhanced; °3500K & 4000K CCT options available.



YOUR PART NUMBER

length LED modules power CCT/CRI call factory
 additional options

ETG-L RP - - P - C -

leave blank (4')
8 (8')

1080 (1 LED module/80W)
2160 (2 LED modules/160W)
3240 (3 LED modules/240W)
4320 (4 LED modules/320W)
6480 (6 LED modules/480W)

1 120-277VAC
2 480VAC
4 120-277VAC (with dimming driver)
5 3500k/80CRI
6 5600k/94+CRI

G1 120VAC plug
G2 277 VAC plug

M1 on/off
 motion sensor
R1 Remote mount driver

ETG-AY2T-12
 Two non-adjusting toggle mounts,
 12" (standard with 1, 2, or 3-Tube Linear)



ETG-AY2T-18
 Two non-adjusting toggle mounts, 18"
 (standard with 4 or 6-Tube Linear)



HARDWARE OPTIONS

ETG-YSM-5	ETG-WHM-5	ETG-YTM-10	ETG-PSM
x2 Y-Style mounts, 2 hooks/each, 5 ft cable (will mount 1 linear light)	x2 Single Wire Mounts, one hook/each, 5 ft cable (Need 2 sets to mount 1 linear light)	x2 Y-Style Mounts, 2 Toggle Ends, 10 ft Cable (will mount 1 linear light)	x1 pendant style mount (no mounting cables)

All options noted above are available in 4', 4'-H and 8'
 *requires 2 per tube for full direction control