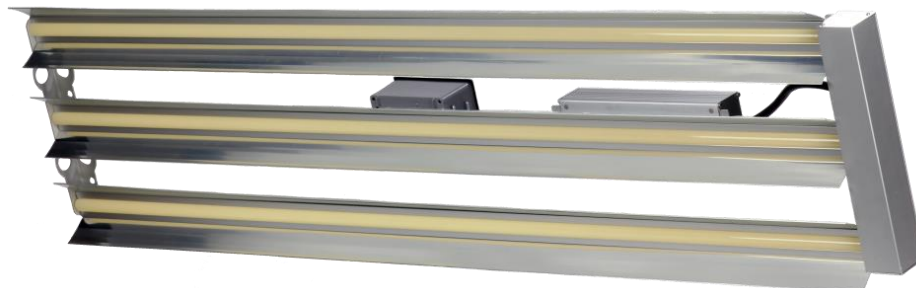


ETG-LRP




LED Remote Phosphor Linear High Bay and Low Bay Lighting



1. INTRODUCTION

Advanced LED Remote Phosphor (LRP) lighting provides superior efficacy, reduced glare, and even lighting output. These lighting products are designed for indoor facility lighting, ranging from 15'-60' ceilings, such as industrial or retail applications. A wide variety of lighting options, along with the LRP series' glass-free, long lifetime, dimmable design, make it a great lighting solution in many different setting

Precautions

	WARNING Risk of electrical shock. Disconnect power before servicing or installing product. <i>Risque de choc électrique. Coupez l'alimentation avant l'entretien ou l'installation du produit.</i>
	WARNING Risk of injury or damage. Unit will fall if not installed properly. Follow installation instructions. <i>Risque de blessures ou de dommages. Unité va tomber s'il n'est pas installé correctement. Suivez les instructions d'installation.</i>
	CAUTION Risk of injury. Wear safety glasses and gloves during installation and servicing. <i>Risque de blessure. Porter des lunettes de sécurité et des gants lors de l'installation et de l'entretien.</i>

This luminaire is designed to be used in ambient temperatures of -40C to +45C (-40F to +113F) and be mounted horizontally with the light source down as shown above. This luminaire should be installed indoors. It should not be mounted in wet locations in which water can drip, splash, or flow into the luminaire.

2. GETTING STARTED

2.1 Shipping Weight

ETG-LRP1060 – 1 Tube – 3.53 lbs. | ETG-LRP2160 – 2 Tube – 7.30 lbs.
ETG-LRP3240 – 3 Tube – 10.9 lbs. | ETG-LRP4320 – 4 Tube – 14.6 lbs.
ETG-LRP6480 – 6 tube – 21.8 lbs.

2.2 Unboxing

Our packaging is designed to protect the luminaire during shipping. Please inspect to confirm it was not damaged in during the process.

2.3 Handling

Once unpacked, the luminaire can become damaged if mishandled. Do not stack luminaires after unpacking. Protect the remote phosphor plate from scratching.

2.4 Package Contents

- Light fixture - LED tubes, power supply, heat sinks (assembled)
- Installation Instructions
- Reflector
- Reflector Lock Clips

2.5 Recommended Accessory (Mounting)

- ETG-YSM-05: Y-mounting cables with hook ends.
- Pendant Mount System

3. INSTALLATION

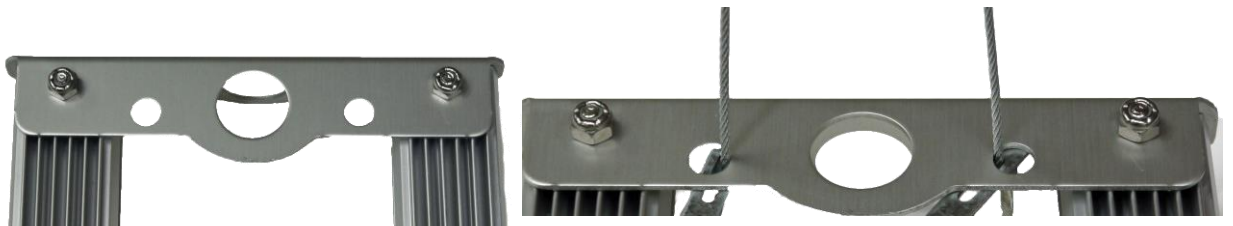
It is recommended to first mount the LRP fixture in the desired position before installing reflectors. The LRP series come packaged with the selected reflector as ordered to suit a variety of applications.

3.1 Mounting

The LRP can be mounted using a variety of hardware, such as cable, hook, or chain. The following steps utilize the recommended ETG-YSM-05 Mounting Cables:

- 1) Install cable to the desired fixture height using proper hardware based on application (follow local code if necessary).
- 2) Loop cable around mounting point or hardware and slide through locking mechanism.
- 3) Locate Mounting Holes in bracket (shown in Figure 1).
- 4) Loop hooks from mounted cable through set of holes on each end of the fixture – 4 hooks total.

Figure 1 - ETG-LRP Mounting Bracket

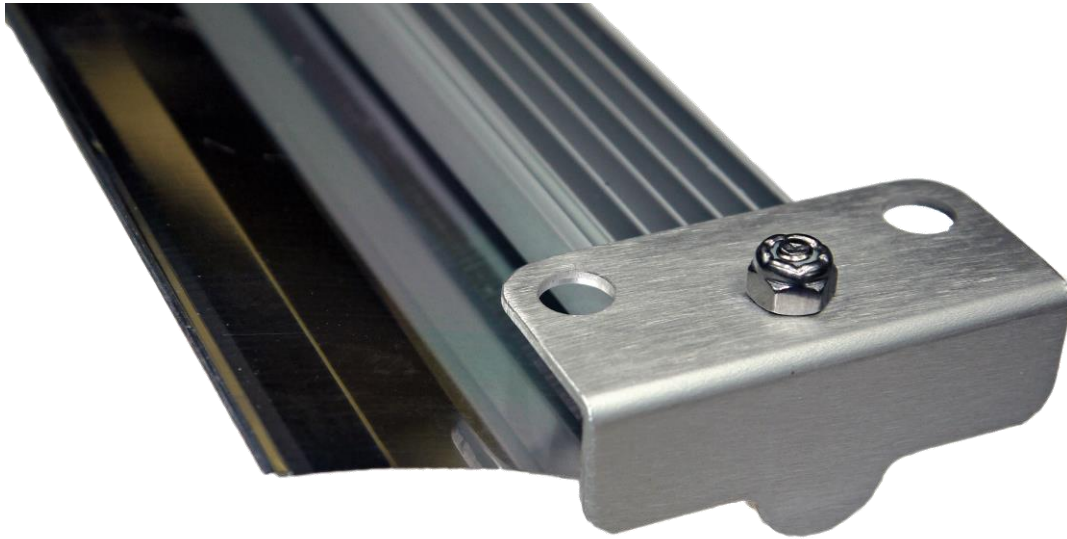


Note: 3, 4, and 6 tube fixtures will have multiple sets of holes to be used for adjustment depending on installed height. Make sure to use set closest to center or closest to edge of bracket for level alignment.

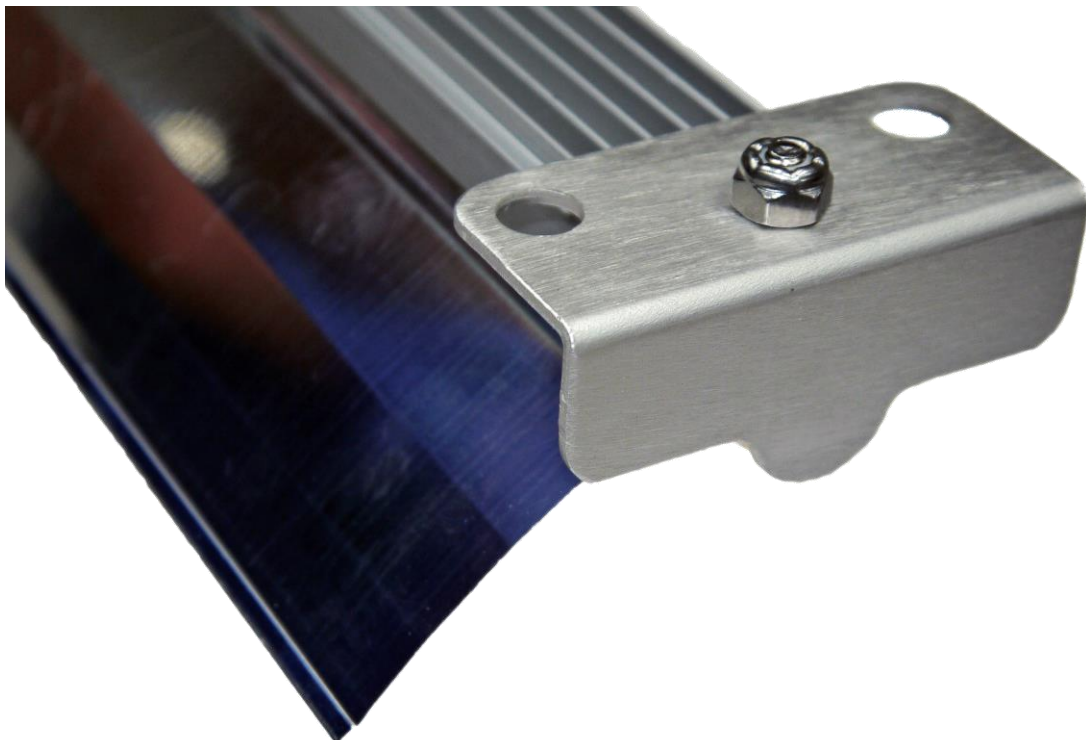
- 5) Using a leveling tool, adjust the cable length at the Locking Mechanism to level the fixture horizontally.

3.2 Reflectors

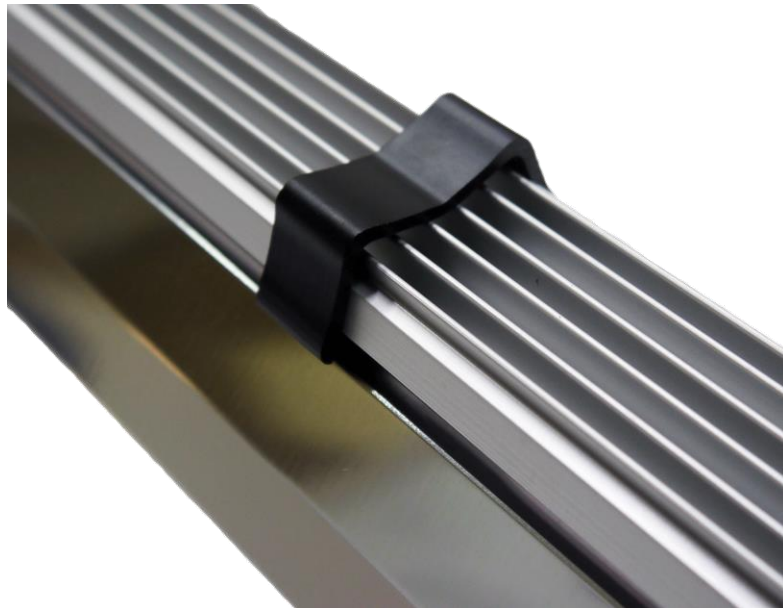
- 1) Obtain pair of reflectors for each tube.
- 2) Slide flat edge of reflector into slot on the light housing (heat sink) with reflective side facing down.



- 3) Gently slide outside edge down so that the reflector tab going into the fixture becomes flush against the housing.



- 4) Clip a reflector lock on each end of the tube by pressing down evenly in the center (refer to arrows in figure 2), locking them into place.



- 5) Remove protective coating from the reflector prior to powering on the light.
- 6) Clean reflectors with a non-abrasive mild soap or neutral PH cleaner to rid them any installation smudges.

4. WIRING

WARNING

Risk of electrical shock. Disconnect power before servicing or installing product.
Risque de choc électrique. Coupez l'alimentation avant l'entretien ou l'installation du produit.

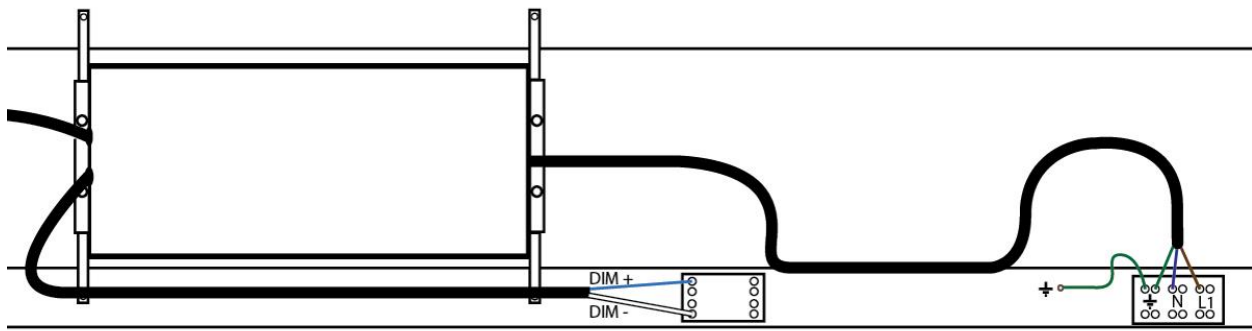
Make all electrical connections in accordance with the National Electrical Code and local code requirements. Verify that supply wiring it to the nameplate.
The wire lead from the luminaire power supply should be connected to the service wiring.

The standard power supply will have the following connections:

Wire Color	Function
Green/Yellow	Ground
Brown	A/C Live
Blue	A/C Neutral

If the 0-10V dimming option is added, the following two-wire terminal block will be added to the luminaire:

Wire Color	Function
Blue	DIM +
White	DIM -



5. CLEANING

The exposed surface of the remote phosphor panel is a tough, impact resistant polycarbonate. To maintain efficiency, it **should be cleaned with a mild soap or neutral PH cleaner**. Abrasives or cleaners containing chlorinated or aromatic hydrocarbons should not be used. Once clean, rinse with cold water and wipe dry with a soft cloth.

6. TECHNICAL SUPPORT

Tel: 317 916-4274

Web: <http://www.hornerlighting.com>

Fax: 317 639-4279

Email: techspt@HornerETG.com